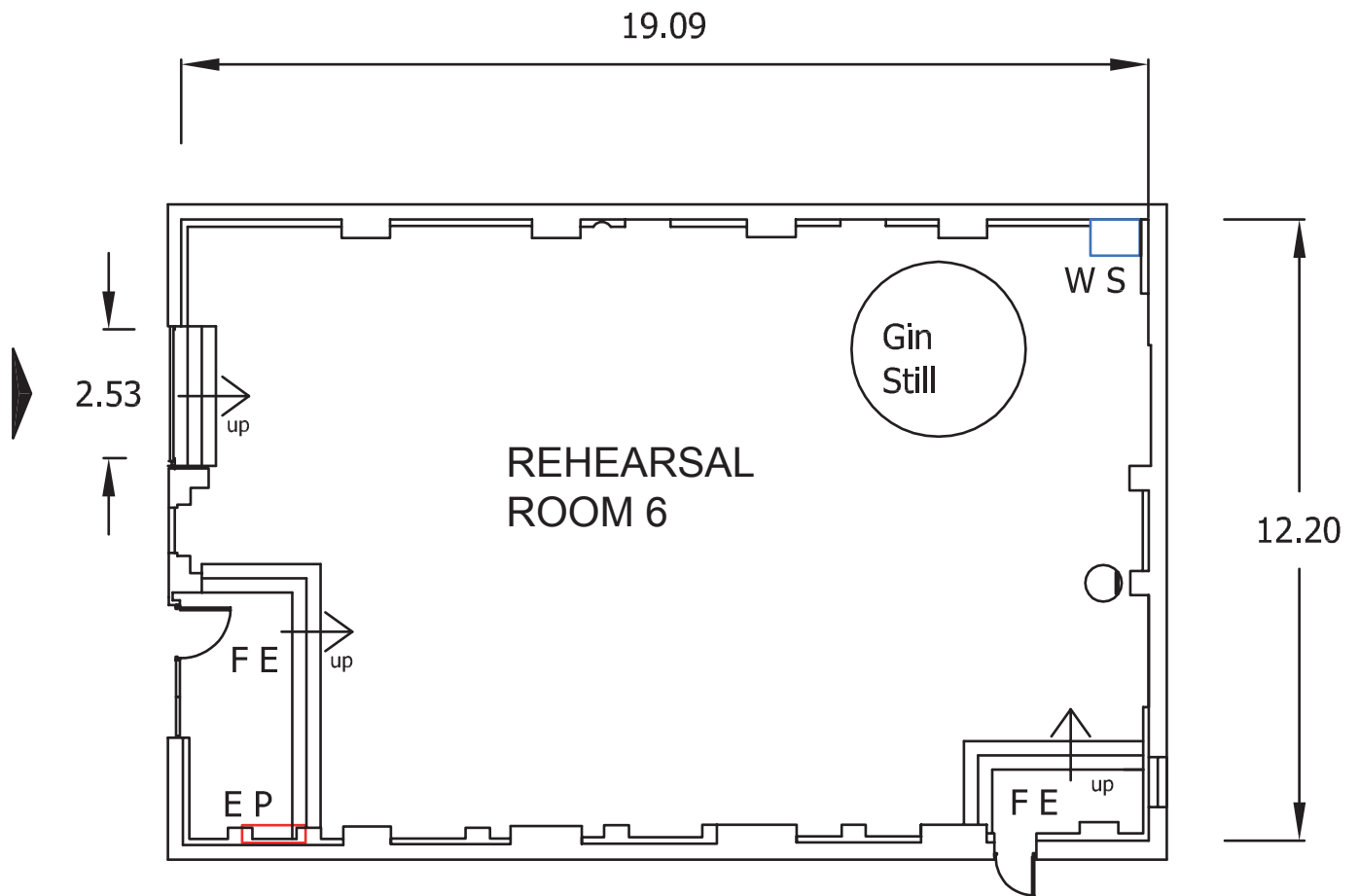


Rehearsal Room 6

The Gin Still



KEY

	MAIN ENTRANCE
FE	FIRE EXIT
EP	ELECTRIC PANEL
WS	WATER SUPPLY OR SINK
H	HEATER

REHEARSAL ROOM DIMENSIONS

REHEARSAL ROOM 6	LENGTH	WIDTH	HEIGHT	AREA
Feet/inches	62'7"	40'0"	30'7"	2,507 sq ft
Metres	19.09m	12.20m	9.35m	232.90 sq m

Dimensions are not to be scaled from this drawing. Production must verify all dimensions before commencing any works on this stage.

Rehearsal Room 6

Technical details

REHEARSAL ROOM SIZE	Length	62'7" ft	19.09 m
	Width	40'0" ft	12.20 m
	Height (to runway beams)	30'7" ft	9.35 m
	Area	2,507 sq ft	232.90 sq m
ELECTRICAL SUPPLY	Maximum electrical load	AC full load Amps 3 phase C – from outlets	
	Number of 32 Amp sockets	1	
	Number of 13 Amp sockets	14	
BEAM LOADING	Maximum centre point loading	300kgs	
	Maximum UDL loading	1330kgs	
	Number of roof beams	N/A	
	*maximum total distributed load across the length of steel pair of channels		
WALL ANCHOR POINTS	1800kgs (SWL)		
LOADING ACCESS	Double doors via Loading Bay		
FLOOR TYPE	Wooden, raised floor		
FLOOR LOADING	Limited to 175kgs/m ²		
HEATING	Heated air blower	Yes	
WATER SUPPLY	Yes		
TELECOMS & BROADBAND	Not available		
FIRE PROTECTION	Sprinkler activation temperature	N/A	
	Smoke detectors	No	
FIRE EXTINGUISHERS	H2O	0	
	CO2	2	
	Foam	2	
RED LIGHT AND BELL	No		
EXTRACTION	No		

