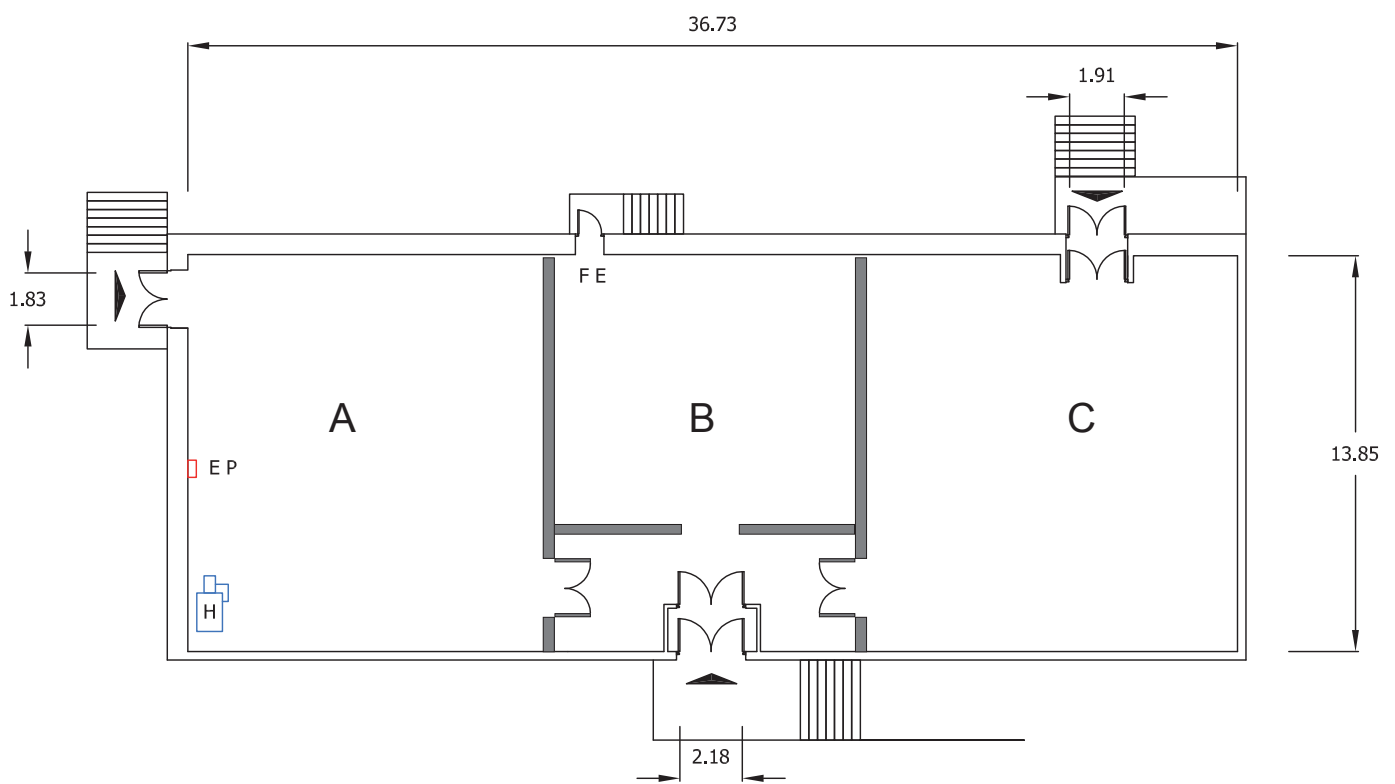






Rehearsal Room B



KEY

	MAIN ENTRANCE
	FIRE EXIT
	ELECTRIC PANEL
	WATER SUPPLY OR SINK
	HEATER

REHEARSAL ROOM DIMENSIONS

REHEARSAL ROOM B	LENGTH	WIDTH	HEIGHT	AREA
Feet/inches	29'6"	32'10"	21'12"	947 sq ft
Metres	9m	10m	6.70m	90 sq m

Dimensions are not to be scaled from this drawing. Production must verify all dimensions before commencing any works on this stage.

Rehearsal Room B

Technical details

REHEARSAL ROOM SIZE	Length	29' 6"	9 m
	Width	32' 10"	10 m
	Height (to runway beams)	21' 12"	6.70 m
	Area	947 sq ft	90 sq m
ELECTRICAL SUPPLY	Number of 63 Amp sockets	N/A	
	Number of 13 Amp sockets	1 double	
BEAM LOADING	None permitted		
WALL ANCHOR POINTS	N/A		
LOADING ACCESS	External dock doors: 2m wide Rehearsal Room doors: Double Doors via Lobby		
FLOOR TYPE	Harlequin Activity floor with Standfast vinyl with top surface		
FLOOR LOADING	None permitted		
HEATING	High level radiant gas heaters	2	
WATER SUPPLY	No		
TELECOMS	No		
FIRE PROTECTION	Sprinkler activation temperature	141C	
	Smoke detectors	No	
FIRE EXTINGUISHERS	H2O	0	
	CO2	1	
	Foam	1	
RED LIGHT AND BELL	No		
EXTRACTION	No		

