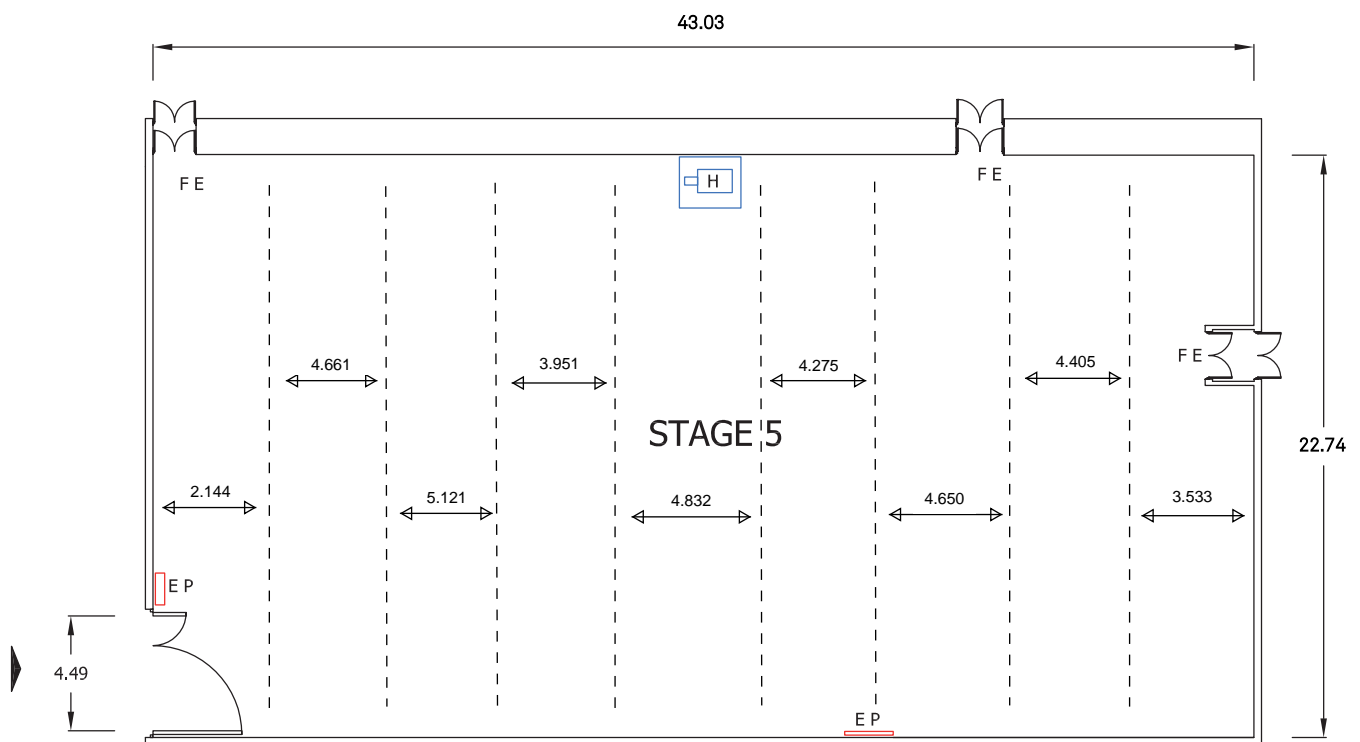


# Stage 5



## KEY

	MAIN ENTRANCE
FE	FIRE EXIT
EP	ELECTRIC PANEL
WS	WATER SUPPLY OR SINK
H	HEATER

## STAGE DIMENSIONS

STAGE 5	LENGTH	WIDTH	HEIGHT	AREA
Feet/inches	141'2"	74'62"	22'0"	10,442 sq ft
Metres	43.03m	22.74m	6.70m	970.10 sq m

Dimensions are not to be scaled from this drawing. Production must verify all dimensions before commencing any works on this stage.

# Stage 5

## Technical details

STAGE SIZE	Length	141' 2"	43.03 m
	Width	74' 62"	22.74 m
	Height (to runway beams)	22' 0"	6.70 m
	Area	10,442 sq ft	970.10 sq m
ELECTRICAL SUPPLY	Maximum electrical load	AC full load Amps 400 3-phase <i>Connection via sequential NRG Powerlock</i>	
	Number of 16 Amp sockets	x2	
	Number of 13 Amp sockets	x18	
BEAM LOADING	1 Tonne evenly distributed, per beam. 9 x beams		
WALL ANCHOR POINTS	N/A		
LOADING ACCESS	Dock doors		
FLOOR TYPE	Concrete with wooden overlay		
FLOOR LOADING	N/A		
HEATING	Heated air blower	Yes	
WATER ON STAGE	Yes		
TELECOMS & BROADBAND	Available		
FIRE PROTECTION	Sprinkler activation temperature	68C	
	Smoke detectors	No	
FIRE EXTINGUISHERS	H2O	0	
	CO2	2	
	Foam	2	
RED LIGHT AND BELL	Yes, next to entrance		
EXTRACTION	No		

